

PREPARATION



In addition to Qoramatic® Automated Stool Management, lubricant, gloves, and approx. 500ml distilled water/saline will be required.

Qoramatic
Automated Stool Management

DIRECTIONS FOR USE

READ ALL INSTRUCTIONS CAREFULLY BEFORE USING THE KIT

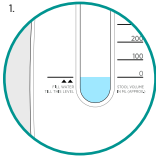
ATTENTION: This poster provides a quick reference for proper use of Qoramatic Automated Stool Management.

Qoramatic is indicated for fecal management by diverting and collecting liquid stool to minimize skin contact in bedridden patients.

The device is for use in patients 18 years and older only.

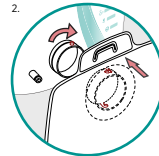
Please consult product IFU for further information.

DRAINAGE BAG SETUP



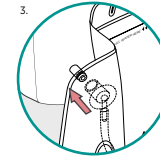
Fill Irrigation Chamber

Fill the irrigation fluid chamber of the drainage bag with distilled water/saline, up till the indication mark.



Connect Bag

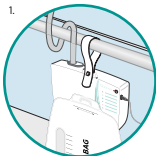
Mate the bag connector with the matic-hub and rotate it clockwise until they are locked together.



Connect Irrigation

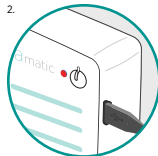
Push drainage bag irrigation connector on to the matic-hub irrigation port.

MATIC HUB SETUP



Hang Device

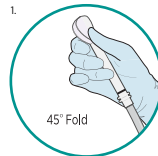
Loop device strap over the bedside rail and secure. Ensure device is upright.



Connect Power Adapter

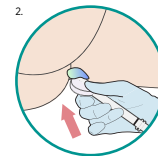
Plug in and connect power adapter with the matic-hub. A solid red indicator will appear on the device.

RECEPTACLE INSERTION



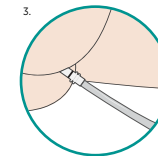
Fold and lubricate

Fold the receptacle twice, diagonally, to create a smaller conical shape and generously apply lubricant for easy insertion.



Insert

Gently insert the receptacle through the anal orifice until it is past the anal canal and above the ano-rectal junction.



Ensure Correct Placement

Black receptacle indicator visible immediately outside anal orifice indicates correct device placement.

RECEPTACLE CONNECTION



Connect Receptacle

Connect the distal end of the transit tube to the Matic hub using the tube connector. Ensure snug fit. Looping the tube around the bed rail ensures it doesn't get disconnected from the matic-hub.

MAINTENANCE

Replace Bags

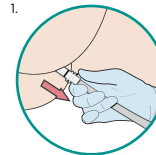
Replace drainage bag when full with fecal exudate or the irrigation fluid runs out. Ensure device indicator is blue or solid green. If neither, wait till solid green appears. Tilt matic-hub upwards to prevent spillage. Disconnect irrigation connector and twist bag connector in counter-clockwise direction to disengage bag. Follow instructions in the 'Drainage Bag Setup' section.



Check Indicator

Check device indicator periodically to ensure device is operational and does not require troubleshooting.

REMOVAL AND DISPOSAL



Remove Receptacle

Unplug the device. Hold the receptacle close to anal orifice and retrieve slowly.



Device Disposal

Discard device according to institutional protocol.

QORAMATIC STATUS INDICATORS

Colour	Device status	Action required
Solid Red	Device plugged in	Press start button to initiate operation.
Solid Green	Device in rest	No user input required.
Blinking Green	Device in operation	No user input required. (Do not replace bag when device in operation)
Solid Blue	Irrigation fluid exhausted	Replace the drainage bag if water in irrigation fluid chamber is exhausted. Follow instructions in the 'Drainage Bag Setup' section. Ensure irrigation connector on drainage bag and irrigation port on matic-hub are securely connected.
Solid Magenta	Tube block error	Unplug and replug the device. Ensure no portion of the tube is obstructed under the patient or other heavy objects on the bed. Press start button. If error persists, replace the device with a new unit.
Blinking Red	Vacuum error	Try one of the following, and then press start button: 1. Ensure receptacle is adequately inserted inside patient rectum. 2. Ensure drainage bag and receptacle unit connections are secured to the Matic Hub. 3. Replace drainage bag with a new bag.

Distributed by: **SOVEREIGN MEDICAL, INC**
620H Valley Forge Rd, Hillsborough, NC 27278
919-644-1113 sovmed.com